

Social Work !

An overview:
(Help or Hindrance?)

Maureen Spilsbury
Senior Social Worker
Qld Haemophilia Centre
RBWH



What is a Social Worker?

- Helper
- Enabler
- Equipper
- Counsellor
- Broker
- Teacher
- Supporter
- Advocate
- Values, principles and ethical standards
- Work with individuals, families, groups and communities
- Professional Supervision
- Work-place and Professional Body standards and guidelines
- National Body - AASW - Accreditation and CPE



Why are Social Workers often viewed so negatively?

- Bad press
- Not considered an exact science
- Doesn't always fit neatly with the other models of health care
- "Confrontative" and "nosey"?
"May ask unpopular questions!"
- May slow processes down
- Situational reasons
- Difficult Ethical Dilemmas



*Psychosocial needs of the community
versus
The way hospitals are set up to work*

Recent National Survey of Haemophilia Social Workers

- Mailed survey
- No need to identify self or State
- 11 surveys sent - 9 completed
- Response rate: 81%

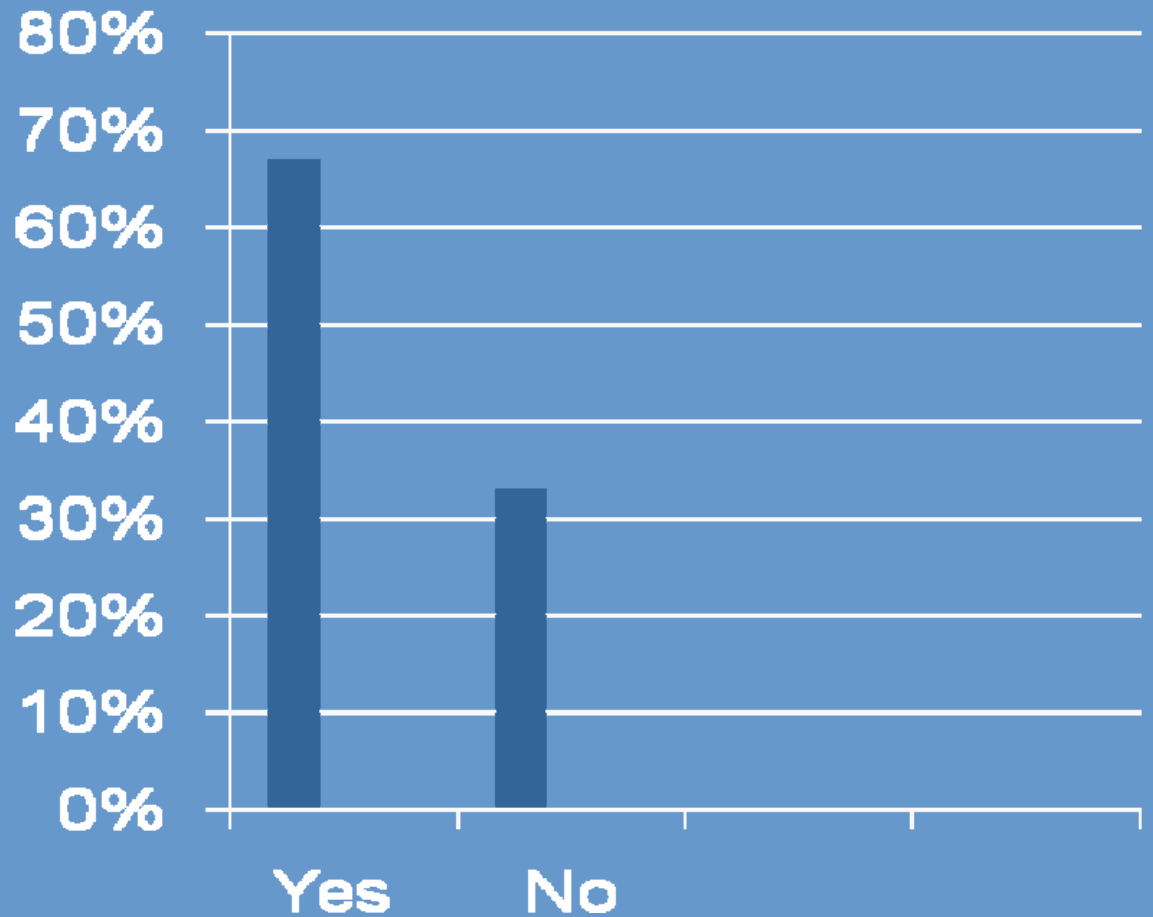


Social Worker role

- 89% of Centres have a designated social worker, psychologist or counsellor role
- 67% regularly attend Haemophilia Clinics



Caseloads Additional to Haemophilia



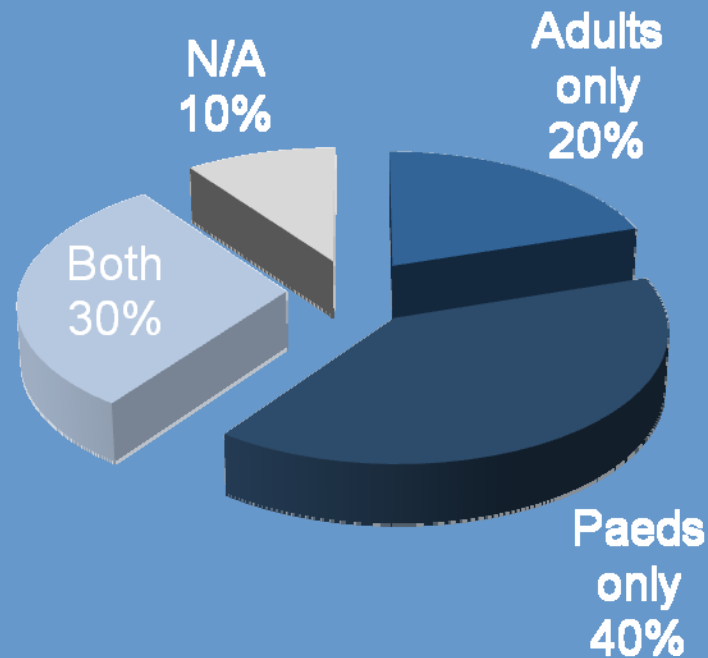
Meetings and Planning days

- 44% are involved in Haemophilia Centre annual planning days
- 33% attend regular meetings across paediatric and adult haemophilia services in their state

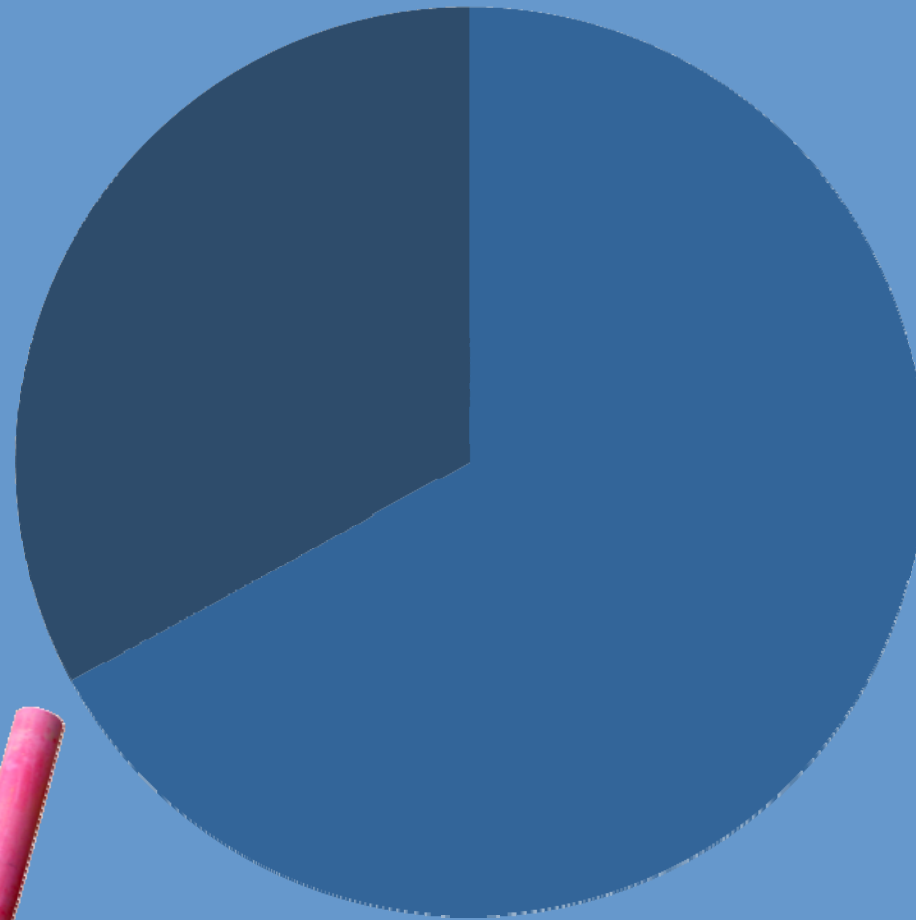


Adult and Paediatric workloads

Caseload Breakdown



Do you provide group education sessions to community members?



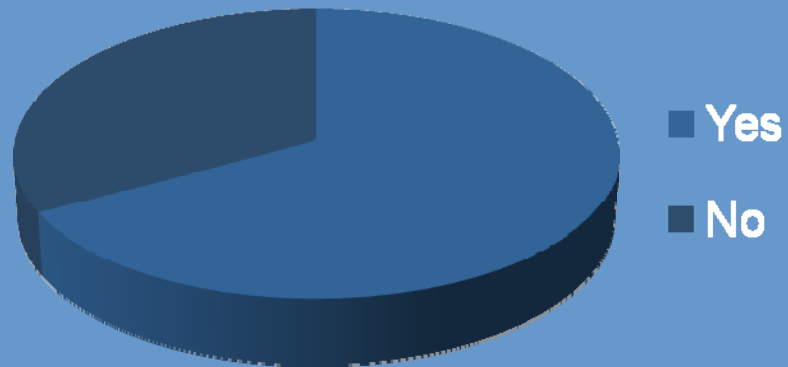
Counseling Rooms

- 56% have a designated counselling area
- In 44% of cases that room is in an area where community members can access it easily

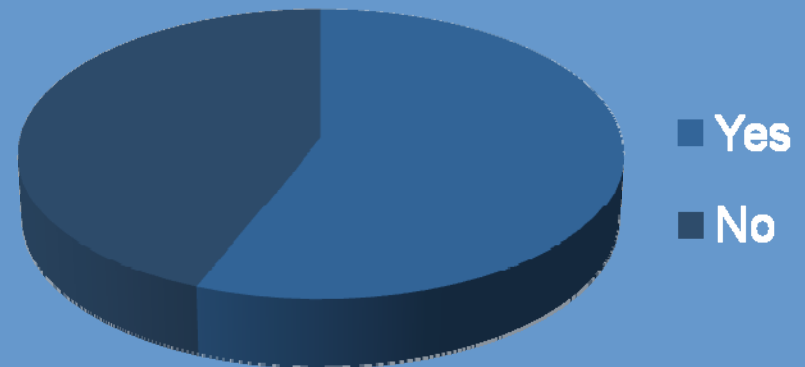


Involvement with State Foundations

Foundation Activities

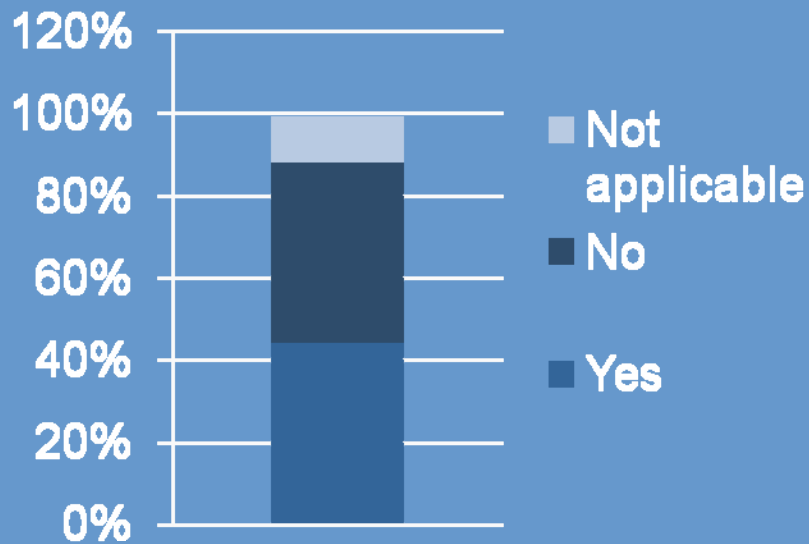


Regular Communication

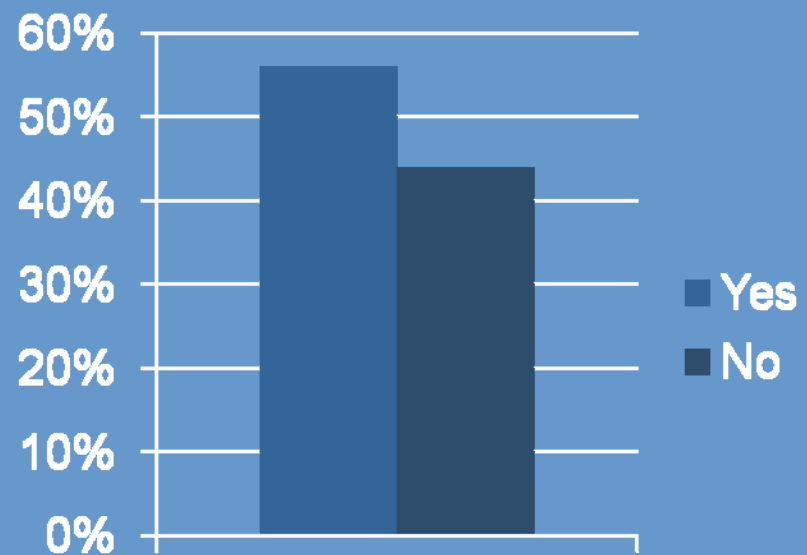


Access to working outside of the Hospital

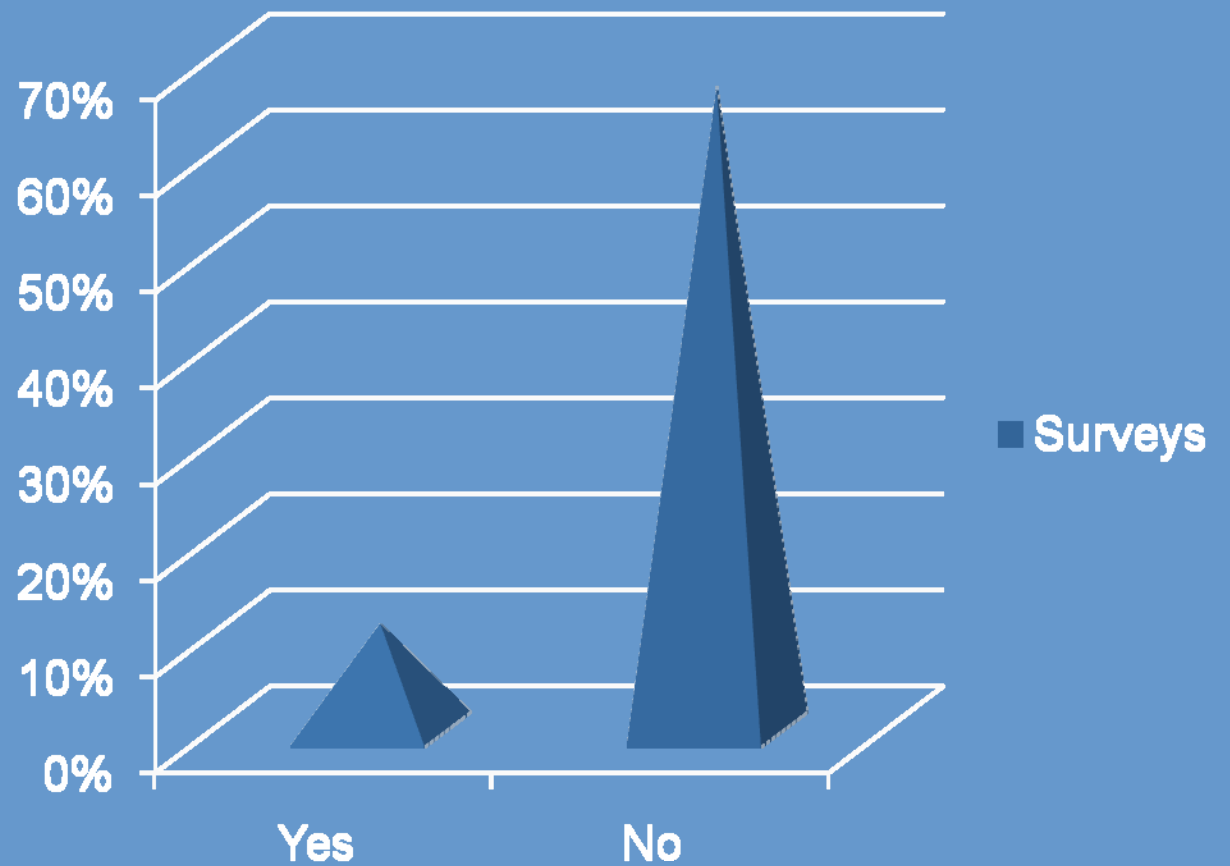
Outreach Clinic Services



Home visits



Have you been involved in Quality of Life Surveys/Needs assessments within the past 2 years?



Are you involved in formal processes to transition paediatric patients to adult services?

- Yes: 56%
- No: 22%
- N/A: 22%

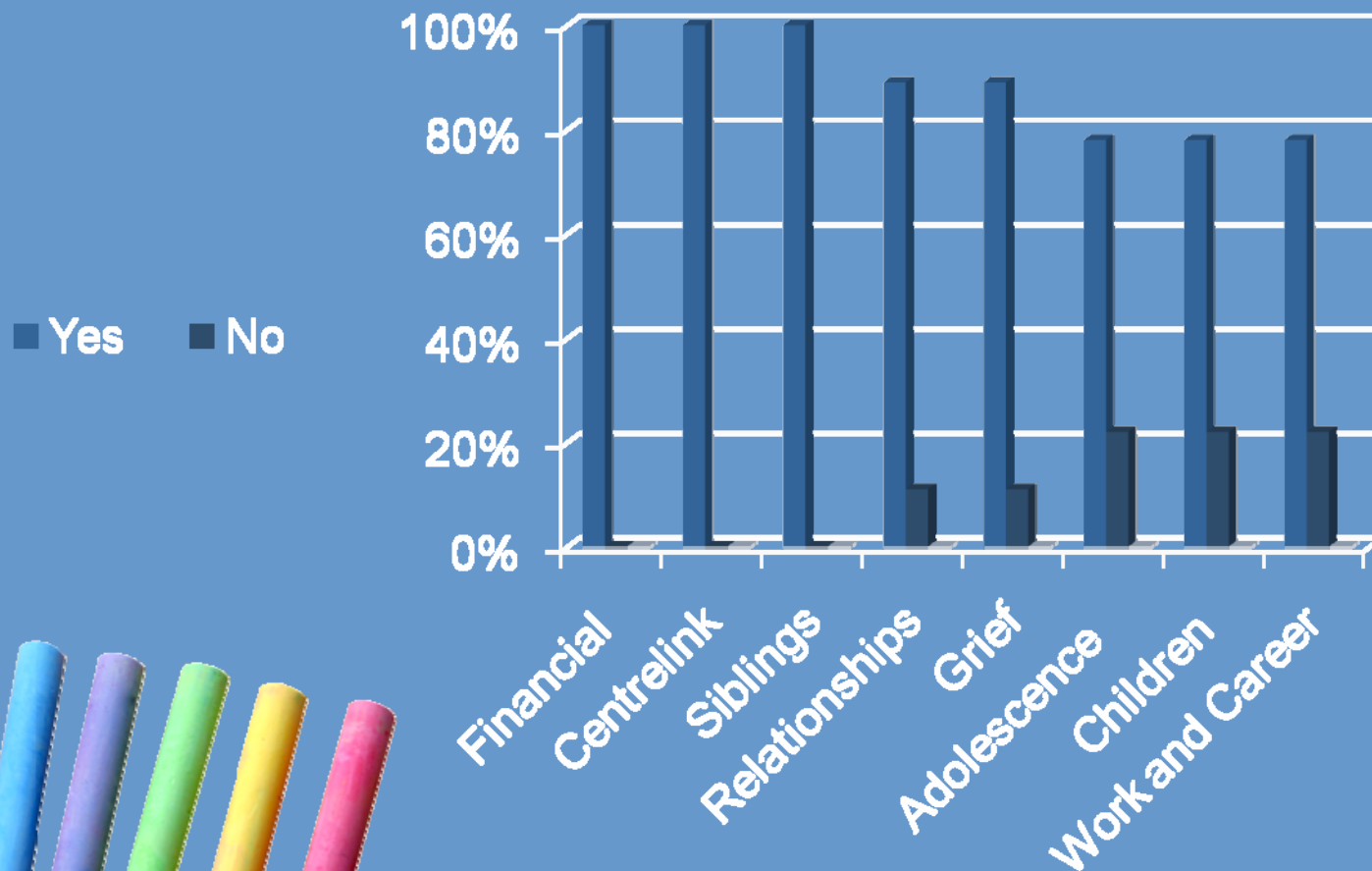


Counselling issues

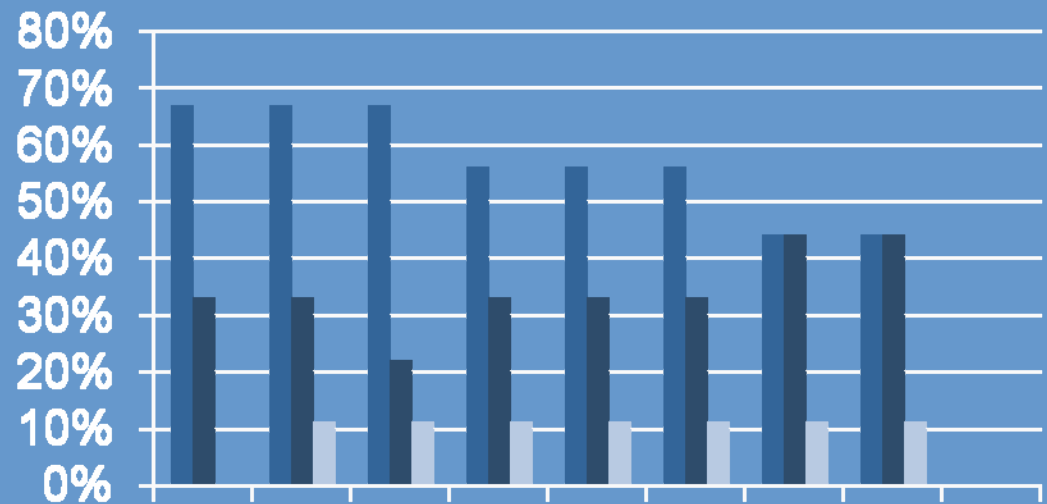
- Hepatitis C issues?
Yes: 44% No: 56%
- HIV issues?
Yes: 44% No: 56%
- Genetic counselling?
Yes: 33% No: 67%



Social Work role in the team



Overview of Issues



von Willebrand Disorder
Transition
Death and Dying
Hepatitis C
Women's Issues
Family Violence
HIV
Genetic Issues

■ Yes ■ No ■ Not applicable

Other issues

- Sex and sexuality
- Body image
- Relaxation strategies
- Re-integration into community
- Adjustment to conditions



Additional Activities

- Referral and consultation
- HFA and wider group activities
- Child protection
- “External work with organisations
e.g. Schools and child care centres



References

- Second edition: 2002 - *AASW Code of Ethics*.
Australian Association of Social Workers



Help or Hindrance?

